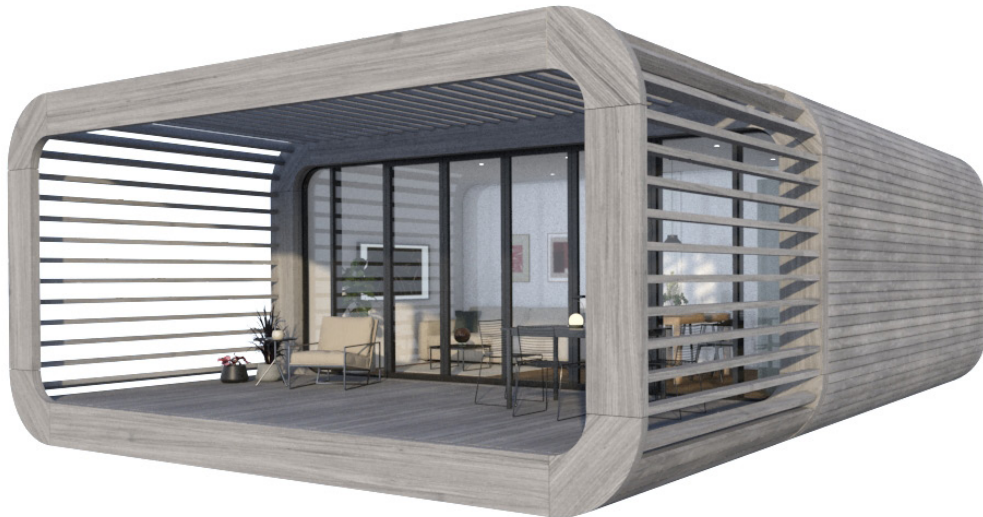


coodo™

grey

exclusive. modular. sustainable. multifunctional.



Overview

The coodo mobile living units are contemporary designed mobile houses, which are, due to advanced technical solutions, highly adaptable to various climates and thus suitable for any chosen location. The units are, with their glazed living spaces in combination with wood facade and wooden pergola, designed in a way that allows them to fit excellently in diverse environments, from uninhabited natural landscapes to urban centers. Meaning the coodos can be installed in previously unimaginable places.

Sustainability is very important. coodo minimizes the environmental impact and always looks for sources of renewable energy. All the coodos are respectful with the environment and are efficient in the use of resources. Among other things, we are aiming for using low-energy housing standards as design and construction guides. We are constantly researching new technologies and designs, so our houses are optimized and technologically updated. We are aiming for Passive House Standards and our main objective is to be 100% self-sustainable and without environmental pollution.

LTG wants to give the customer the freedom to make their unit unique by allowing them to customize it according to their own needs and wishes. We offer different types of mobile homes, which differ in size and equipment and two different leisure units - pergola or pavilion.



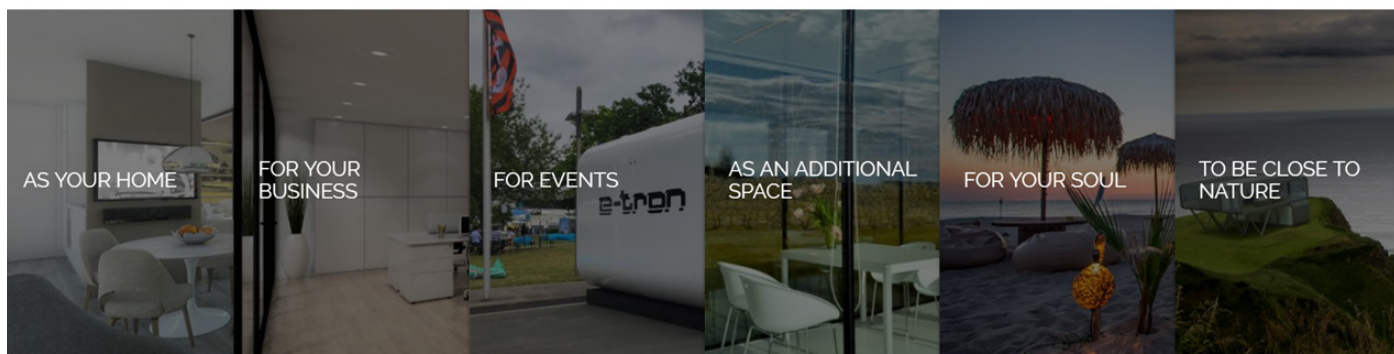
Copyright information

The contents of this document are copyright of LTG Lofts to go OÜ. All Rights Reserved. Information in this document, including but not limited to, text and images, may not, except for strictly private purposes or where otherwise indicated, be reproduced, transferred, distributed or stored without prior written permission by LTG Lofts to go. Modifications to the content of this document are expressly prohibited.

Multifunctional

coodo is mobile living

A coodo is what you want it to be. It means having possibilities. Let us inspire you and use it ...



Focus on the details

Exclusive Design



Modularity

Sustainability



Speed in construction

High quality



Mobility and easy transport

Easy installation



It can be placed almost anywhere

Insulation that allows its exposure to extreme climates



Contact with the outside and nature

Comfort



Modernity and minimalism

Smart Home Systems



Accessibility

Functionality and flexibility



Models

Sizes available

The name of the “coodo _” corresponds to the exterior square meters of the module.

| Our models | Outer dimensions (L x W x H in m) | Inside area (m ² approx.) | Weight (t approx.) | Inside height (meter.) |
|----------------|--------------------------------------|---|-----------------------|---------------------------|
| coodo 24 | 7,4 x 3,3 x 3,2 | 20 | 10 | 2,6 |
| coodo 48 | 7,4 x 6,6 x 3,2 | 41 | 18 | 2,6 |
| coodo 48 north | 7,4 x 6,6 x 3,2 | 37 | 18 | 2,6 |
| coodo 72 | 7,4 x 9,9 x 3,2 | 68 | 26 | 2,6 |
| coodo 72 north | 7,4 x 9,9 x 3,2 | 52 | 26 | 2,6 |

Versions

plain - p

Empty, only coodo shell and front bi-folding window system with entrance door.

Included:

- lights, sockets and switches,
- prepared for floor heating system.

basic - b

p + bathroom

A technical room is installed.

full - f

b + Installations for kitchen + additional room for the coodo 48 / 48 north and two additional rooms for the coodo 72 / 72 north .

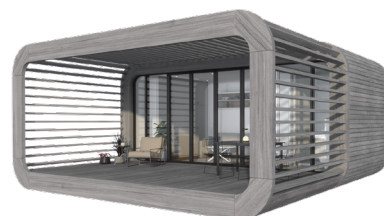
pergola

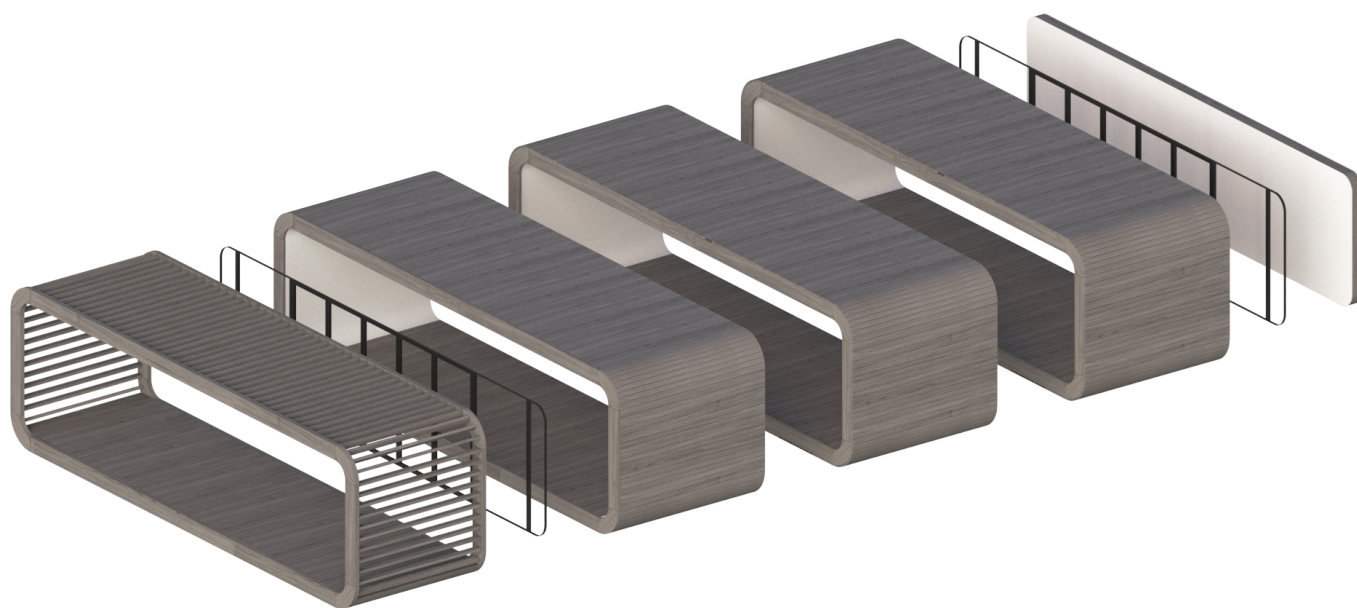
Terrace. Add-on for every coodo.

Wooden beams,
transparent cover for rain protection,
optional outside lights and/or plugs.

north

Special edition model with 11 m² integrated terrace extending from the shell.





Requirements

Property has to be accessible for truck and crane.

The coodo is **delivered** ex-works by truck and set-up by crane.

The production time is approximately 8-12 weeks.

Depending on the type of ground (checked by an expert) a **foundation** is needed, which has to be provided by the client. We can always assist and recommend depending on the type of foundation chosen.

coodo works with electricity. Plumbing for water, sewage and electrical network **connections** have to be present (if applicable). An existing infrastructure is needed on the property to which the coodo can be connected to the existing pipes.

Heating work via electricity and water.

Technical Specifications

Regulations

coodos are built according to standardization and regulations for Denmark, Germany, Sweden and Norway. coodos can also be built to your country regulations once we receive your specifications.

Structural design

coodo grey units are built of DouglasWood cladding as a facade. The 40cm of wall is filled with 30cm of rockwool and Cembrit Windstopper Extreme, ensuring high levels of thermal insulation and long-term stability and durability. The load-bearing structure is made of extra strong structural timber. One of the unit fronts is made with durable double- or triple-glazed aluminum frame windows and doors depending on your location for delivery.

Energy consumption.

The mobile units are highly energy efficient. The built-in household appliances are labeled with class A++ energy efficiency grade as of 2020. Long life LED lamps with higher luminous intensity, lower energy consumption and precise luminosity controls are installed. Inverted air conditioners for cooling and heating and a ventilation system can be included. The unit can be provided with self-sufficient energy supply and equipped with a smart system.

Permissible Load

Climatic loads: coodos have been designed to withstand snow load of 2 kN/m² for most locations in Denmark, Germany, Sweden and Norway. An option to strengthened the snow load can be as an add-on.

Base Frame

Base structure is made of 45 x 300 mm load-bearing structure of planed structural timber.

Insulation

Materials prepared for passive house standards, 30cm of rockwool and Cembrit Extreme are used.

Floor: Exterior bottom Cembrit Windstopper Extreme.

Inside Birch or OSB, min. 22-25mm.

U value (floor, wall, roof): 0,15 W/m²K

Slope

2% roof slope.

Connection and assembly instruction.

A captive fastened clamp-and-hook system ensures the connection between two or more modules. Two modules are closed and secured fore moist and wind. The connection is performed internally with plasterboards like the walls, and externally in the same material as the facade. For the coodo 48 two modules and for the coodo 72 three modules are closed and secured fore moist and wind ensures the connection between coodo-frames, coodo-coodo or coodo-pergola. A detailed assembly and maintance manual will be included for your delivery.

Exterior

Facade

The facade has a profile of 22mm DouglasWood cladding finishes the outer shell. The wood comes from a regional supplier with certified wood logging FSC .
 (Certification – Confirmation of Sustainable Forest Management "Forest Stewardship Council")

Back Wall

The finish of the straight wall is made of the same material as the shell.

Windows and Door

Front windows and glass door are made of aluminum frames with double or triple glazing depending on your locations needs and regulations.

$U_{\text{glass}}=0,6 \text{ W/m}^2\text{K}$

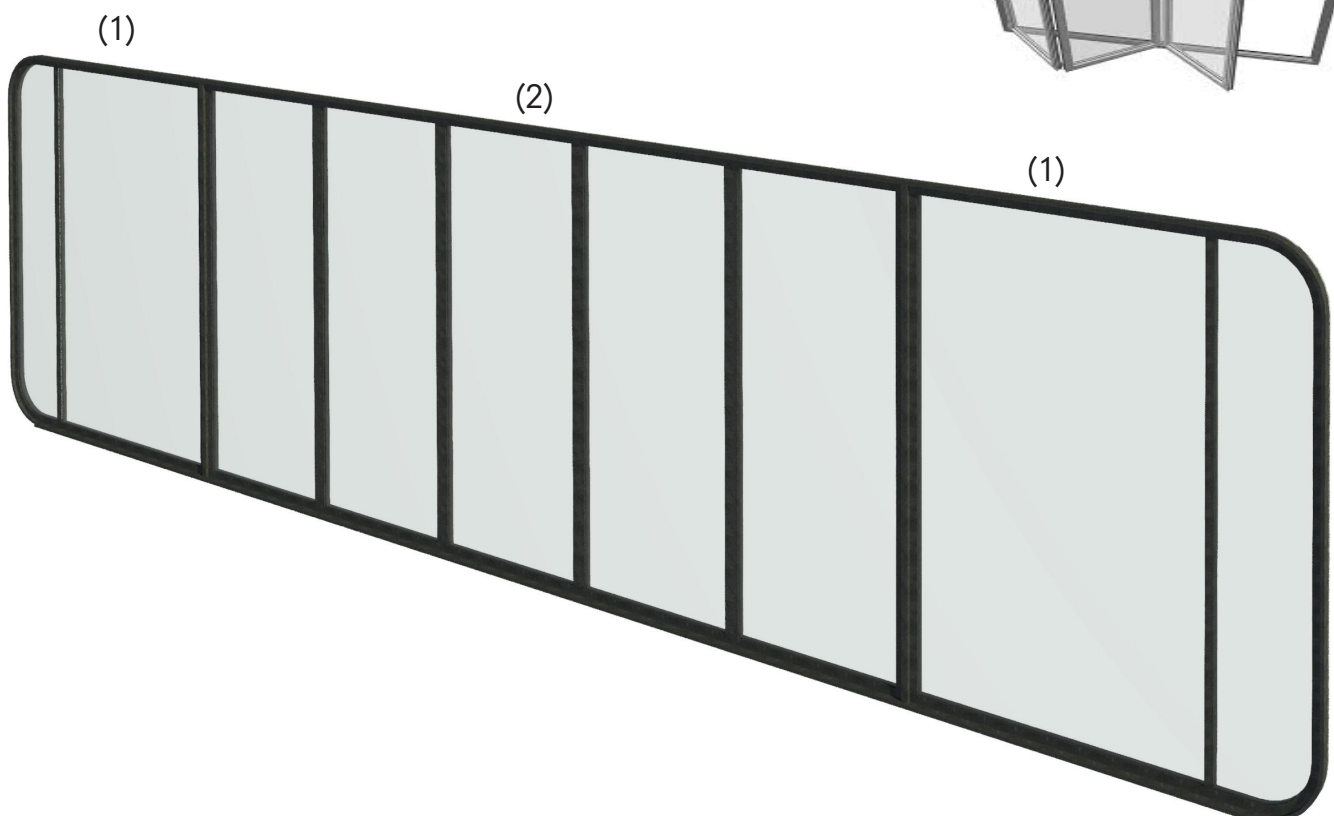
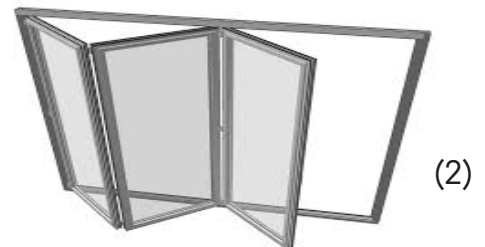
$U_{\text{frames+glass}}=1,6 \text{ W/m}^2\text{K}$

Front Side Window

(1) - Two fixed widows on both curved ends.

(2) - Leaving in between an opening of 2,7m.

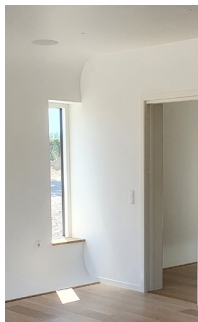
A single hinged door with a locker is applied as your entrance having the full functionality to slide the portion on the side with a bi-fold system.



Interior

Walls

Plasterboards Knauf™ in rooms painted of your choice in two coats of layers.
Ceramic tiles or Kerradeco™ wall systems in bathrooms.



Ceiling

Plasterboards Knauf™.

Flooring

Wood laminate in three choices of either,

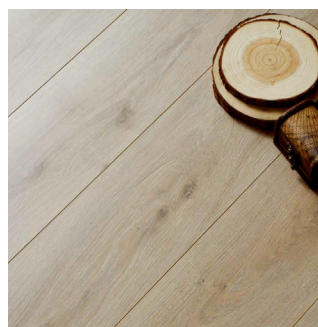
Moland Aston



Oak White



Oak lacquered.



Bathroom

Selected products from Laufen™.

Kitchen.

Add-on for coodo, exclusive kitchen product line from SieMatic™.

Doors

Pocket doors & Swing doors from J Welden™.

Installations

Electricity

Each coodo has its own electrical circuit. In case of more modules attached, the following coodos are connected to the first/main one with the technical room.

Connector box for power and preparation for Internet and WiFi is installed in the technic room. No wires or pipes should be visible from the outside. Technical room available in "basic" and "full" coodo types.

- Ducts
- Wires
- Fuse box
- Sockets and switches
- Electrical equipment
- Lighting

Lights

iGuzzini™, Laser Super Comfort - Ceiling lights: LED spot lights included.



Sockets and Switches

Your choice of sockets and switches comes from Opus™ or ABB™



Opus™, WHITE



ABB™, Busch-Jaeger™

Add-on. Ground sockets by Le Grande™ in metal, number and position to be chosen by the client.

Sound system

Add-on. Integrated speakers in the ceiling; Sonos™.



Plumbing

Necessary internal pipes and tubes are present in basic, living and full and are ready to be connected to the local network.

Water heater contoll from Bosch™ .



HVAC

Heating, ventilation and AIR-condition

Included:

- Heat Pump: Fujitsu™ ARYG12LLTB



-Ventilation: VIESSMANN™ 300-W



- Floor heating and cooling system

- All-in-one unit:

Split system without necessity of external unit: cooling and heating, 250mm thick, 37 dB.



coodo in cooperation with Sensorberg

Add-on, fully networked unit // on-grid via wifi / off-grid via mobile network coodos to be delivered with a smart ready solution



completely locally unbound and controllable from afar



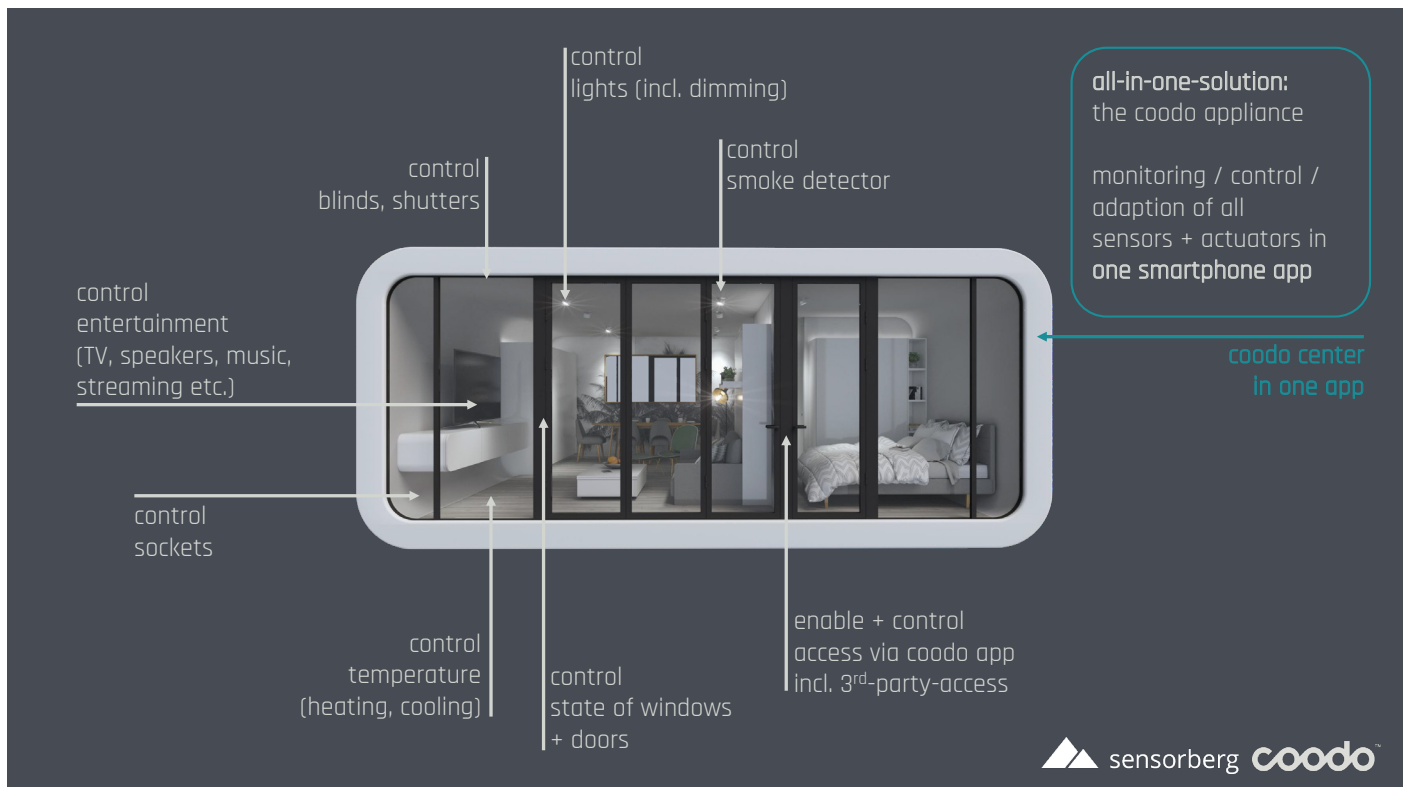
switches and keylocks are additionally installed



all in one app + platform - interactions can be defined, e.g.:
 - doors / shutters react to state smoke detectors
 - heating adapts to state window



provided as Software as a Service (SaaS)



Copyright information

The contents of this document are copyright of LTG Lofts to go OÜ. All Rights Reserved. Information in this document, including but not limited to, text and images, may not, except for strictly private purposes or where otherwise indicated, be reproduced, transferred, distributed or stored without prior written permission by LTG Lofts to go. Modifications to the content of this document are expressly prohibited.

Delivery and Placement

Set up

Delivery by truck and setup by crane. Transport only with low loader. Special permit for height. Property has to be accessible for truck and crane.

Foundation

Depending on the type of ground (checked by an expert), foundation is needed, which has to be provided by the client. We at LTG suggest you contact *Stopdigging.com* for your foundation inquiry.

Provisional legs, ramps or steps will also need to be provided by the client.

Supplies

Electric and/or plumbing network connection have to be present if applicable.

Installation Manual

An Installation Manual will be provided.

Quality Assurances & Warranty.

An operating and maintenance folder with QA materials will be handed over; this is normally in the form of release certificates for the actual building.

The coodo are being built by a quality plan preventing mistakes or defects with systematic actions to ensure that procedure and services are being complied with specified requirements e.g fire, structure and material test. Warranty is limited to five years for permanently installed parts and two years for moving parts.

Copyright information

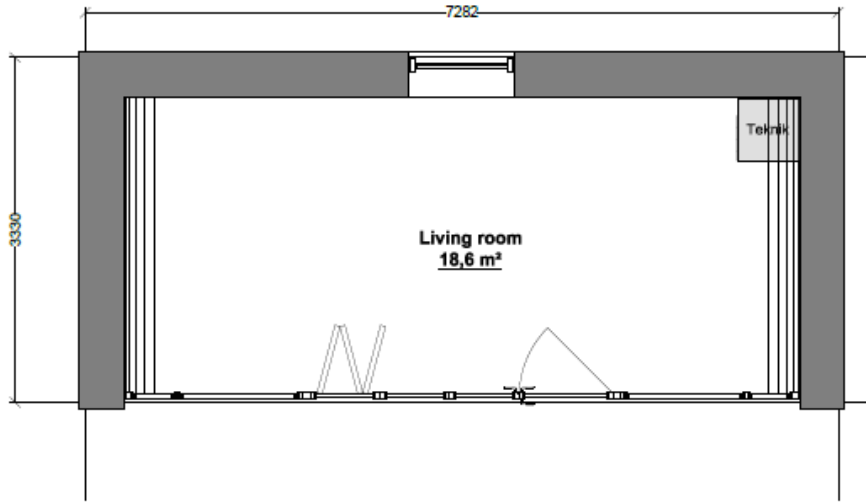
The contents of this document are copyright of LTG Lofts to go OÜ. All Rights Reserved. Information in this document, including but not limited to, text and images, may not, except for strictly private purposes or where otherwise indicated, be reproduced, transferred, distributed or stored without prior written permission by LTG Lofts to go. Modifications to the content of this document are expressly prohibited.

coodo™

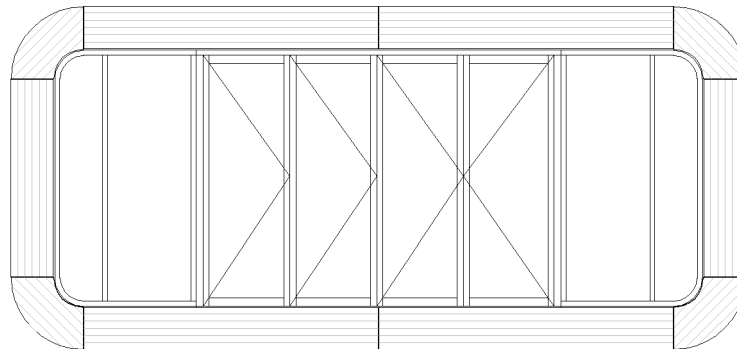
grey

Models & Specifications

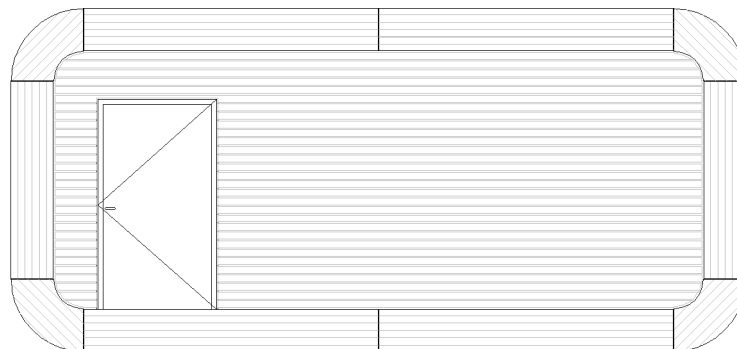
coodo 24 - plain



Floor plan



Front elevation

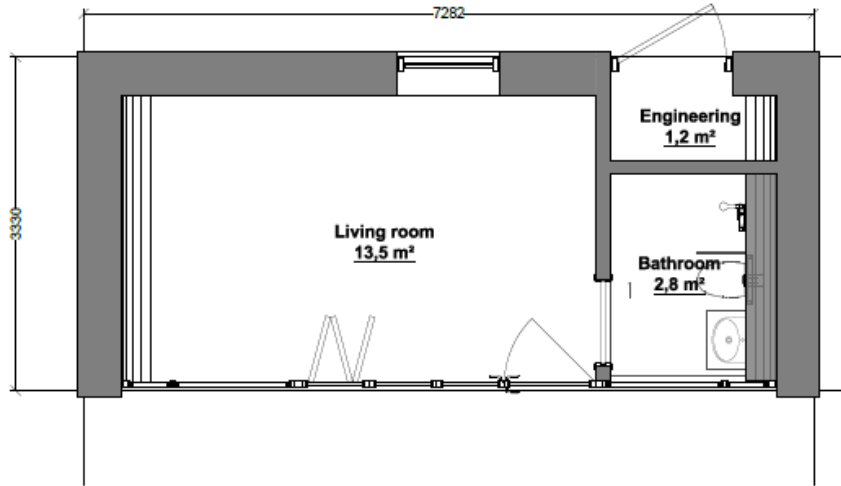


Back elevation

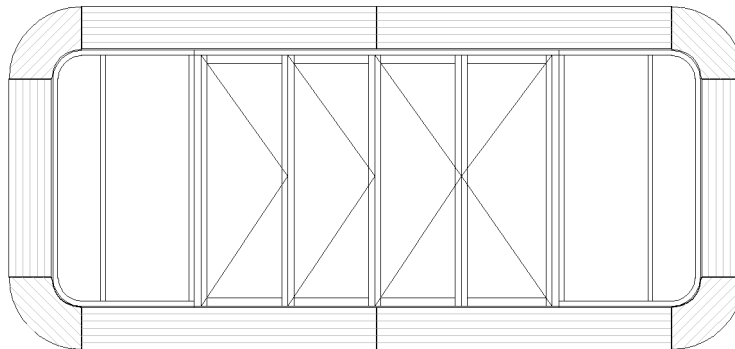
Copyright information

The contents of this document are copyright of LTG Lofts to go OÜ. All Rights Reserved. Information in this document, including but not limited to, text and images, may not, except for strictly private purposes or where otherwise indicated, be reproduced, transferred, distributed or stored without prior written permission by LTG Lofts to go. Modifications to the content of this document are expressly prohibited.

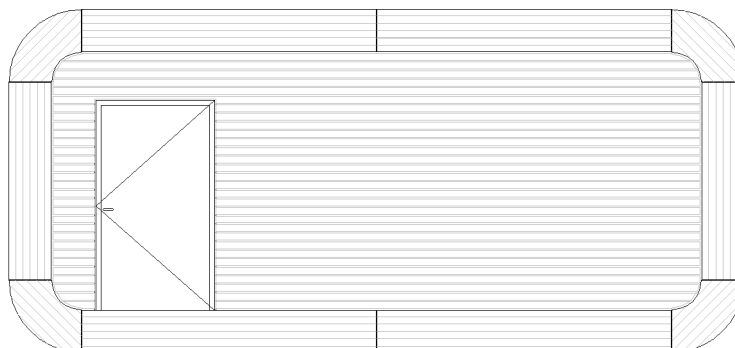
coodo 24 - basic



Floor plan



Front elevation

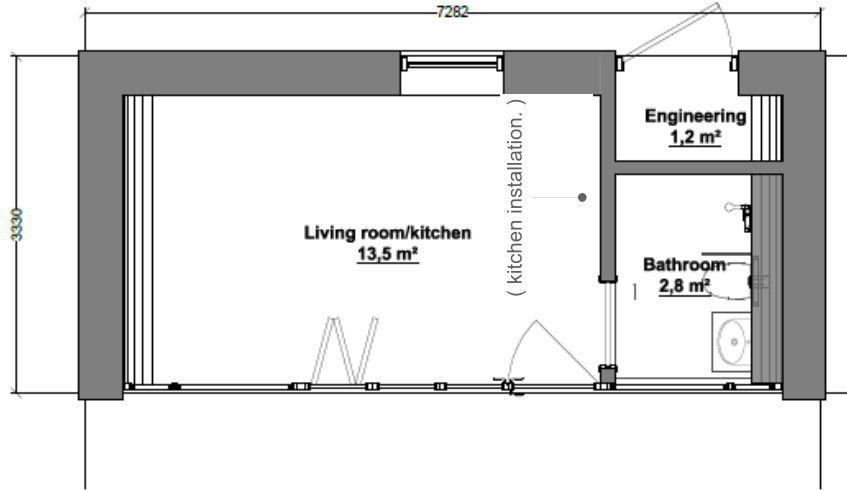


Back elevation

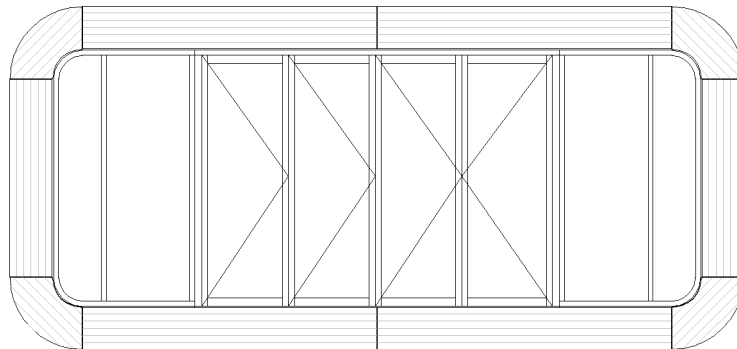
Copyright information

The contents of this document are copyright of LTG Lofts to go OÜ. All Rights Reserved. Information in this document, including but not limited to, text and images, may not, except for strictly private purposes or where otherwise indicated, be reproduced, transferred, distributed or stored without prior written permission by LTG Lofts to go. Modifications to the content of this document are expressly prohibited.

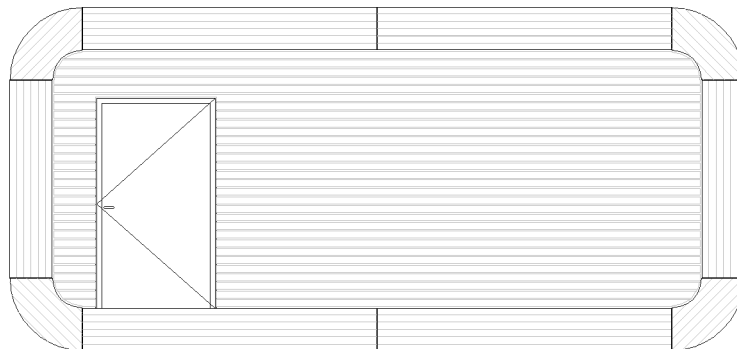
coodo 24 - living



Floor plan



Front elevation



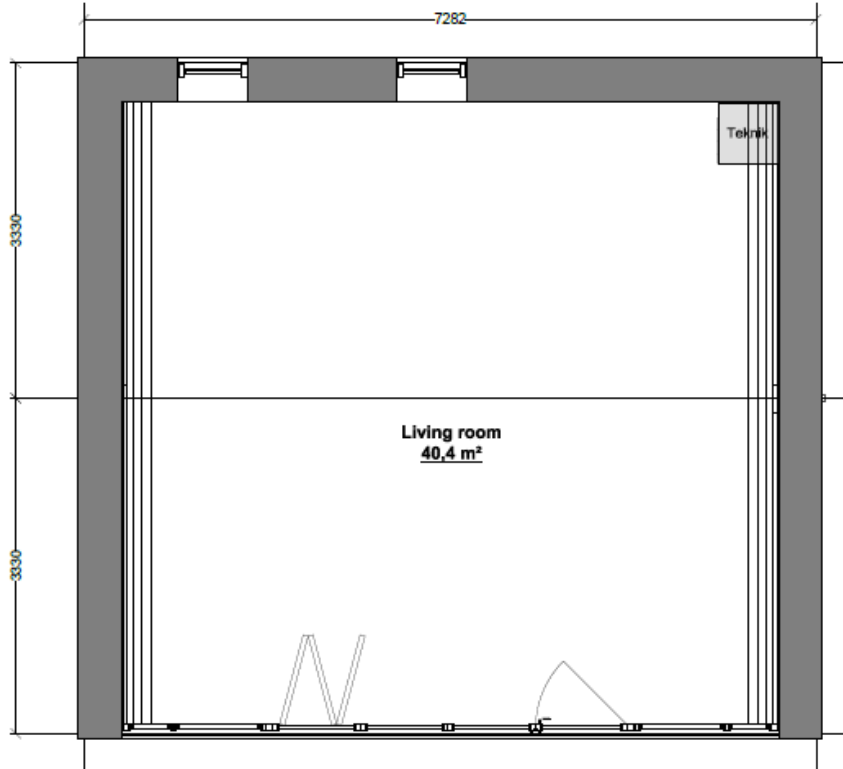
Back elevation

Copyright information

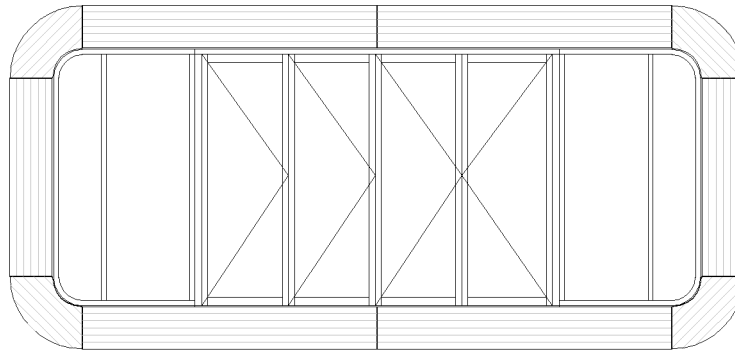
The contents of this document are copyright of LTG Lofts to go OÜ. All Rights Reserved. Information in this document, including but not limited to, text and images, may not, except for strictly private purposes or where otherwise indicated, be reproduced, transferred, distributed or stored without prior written permission by LTG Lofts to go. Modifications to the content of this document are expressly prohibited.

| coodo 24 | | | | |
|--------------------------|----------------------|--|--|--|
| | | Plain | Basic | Living |
| | | 24 one-side glazed | 24 one-side glazed with bathroom | 24 one-side glazed with bathroom, kitchen and room |
| gross area [m2] | | 24,42 | 24,42 | 24,42 |
| module size [m] | | 7,4 x 3,3 | 7,4 x 3,3 | 7,4 x 3,3 |
| building size [m] | | 7,4 x 3,3 | 7,4 x 3,3 | 7,4 x 3,3 |
| facade material | | Douglaswood | Douglaswood | Douglaswood |
| window wall | type | aluminium, colour RAL 7016, sliding windows, U=1,6 | aluminium, colour RAL 7016, sliding windows, U=1,6 | aluminium, colour RAL 7016, sliding windows, U=1,6 |
| | amount | 1 | 1 | 1 |
| windows | type | x | x | x |
| | amount | x | x | x |
| external door | type | | aluminium | aluminium |
| | amount | x | 1 | 1 |
| internal door | type | x | white laminate board, sliding | white lamiante board, sliding |
| | amount | x | 1 | 2 |
| wall finishing | rooms | painted plasterboard | painted plasterboard | painted plasterboard |
| | bathroom | x | ceramic tiles | ceramic tiles |
| floor finishing | rooms | wooden flooring | wooden flooring | wooden flooring |
| | bathroom | x | ceramic tiles | ceramic tiles |
| ceiling finishing | | painted plasterboard | painted plasterboard | painted plasterboard |
| bathroom | | x | 1 | 1 |
| | equipment | x | shower tray, shower faucet, toilet, basin + faucet, under basin cupboard | shower tray, shower faucet, toilet, basin + faucet, under basin cupboard |
| lighting | main points | 12 | 12 | 12 |
| | decorative lightning | x | x | x |
| kitchen | | x | x | prepared for installation |
| | equipment | x | x | x |
| electrics | nb of plugs | 12 1 TV, 1 Internet | 12 1 TV, 1 Internet | 12 1 TV, 1 Internet |
| heating | | prepared for | included | included |
| ventilation | | recuperator | recuperator | recuperator |
| air-con | | x | x | x |
| water supply | | x | Outlet for toilet ø-110, Outlet for shower DN 75, Outlet basin DN 50 PE/PP | Outlet for toilet ø-110, Outlet for shower DN 75, Outlet basin DN 50 PE/PP |
| additional room | | x | x | x |
| technical room | | x | 1 | 1 |
| pergola | | x | x | x |

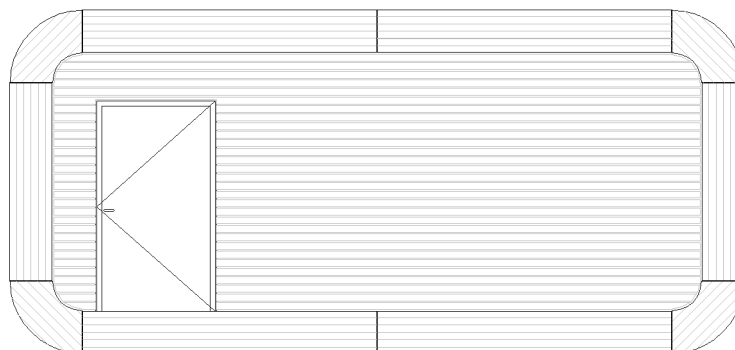
coodo 48 - plain



Floor plan



Front elevation

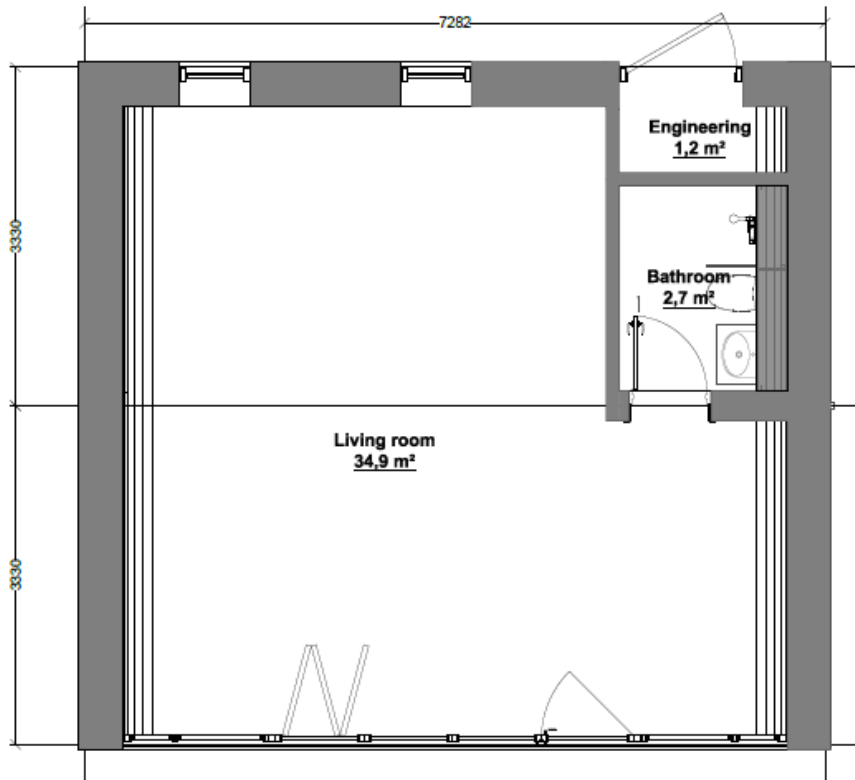


Back elevation

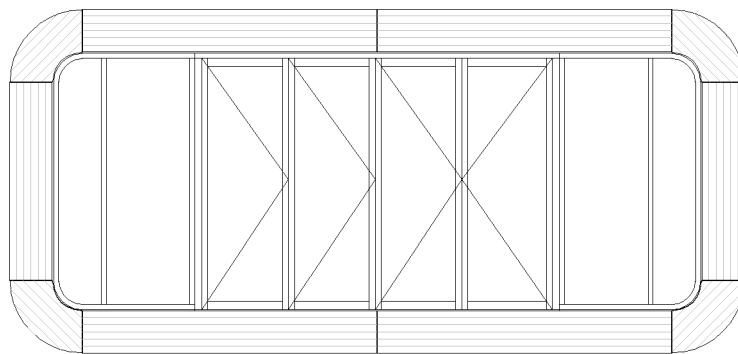
Copyright information

The contents of this document are copyright of LTG Lofts to go OÜ. All Rights Reserved. Information in this document, including but not limited to, text and images, may not, except for strictly private purposes or where otherwise indicated, be reproduced, transferred, distributed or stored without prior written permission by LTG Lofts to go. Modifications to the content of this document are expressly prohibited.

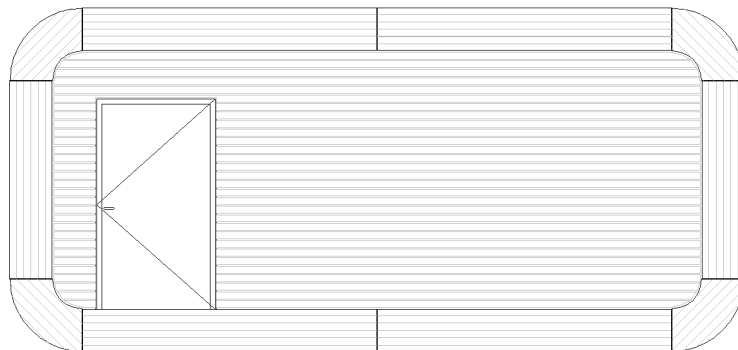
coodo 48 - basic



Floor plan



Front elevation



Back elevation

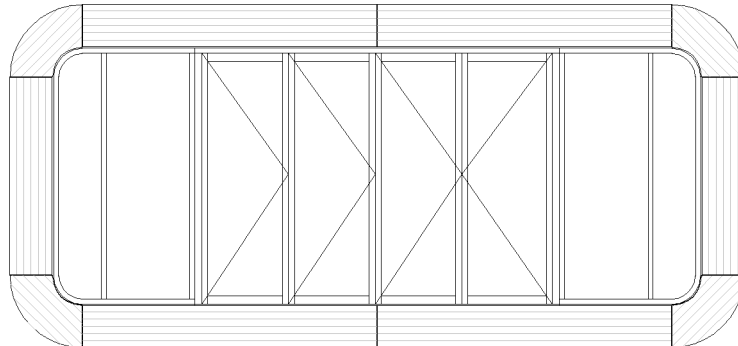
Copyright information

The contents of this document are copyright of LTG Lofts to go OÜ. All Rights Reserved. Information in this document, including but not limited to, text and images, may not, except for strictly private purposes or where otherwise indicated, be reproduced, transferred, distributed or stored without prior written permission by LTG Lofts to go. Modifications to the content of this document are expressly prohibited.

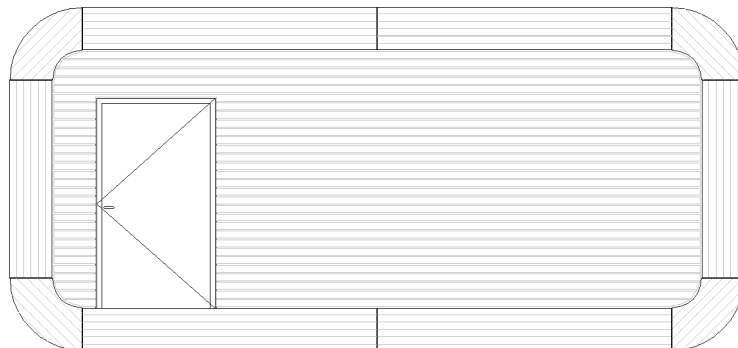
coodo 48 - full



Floor plan



Front elevation

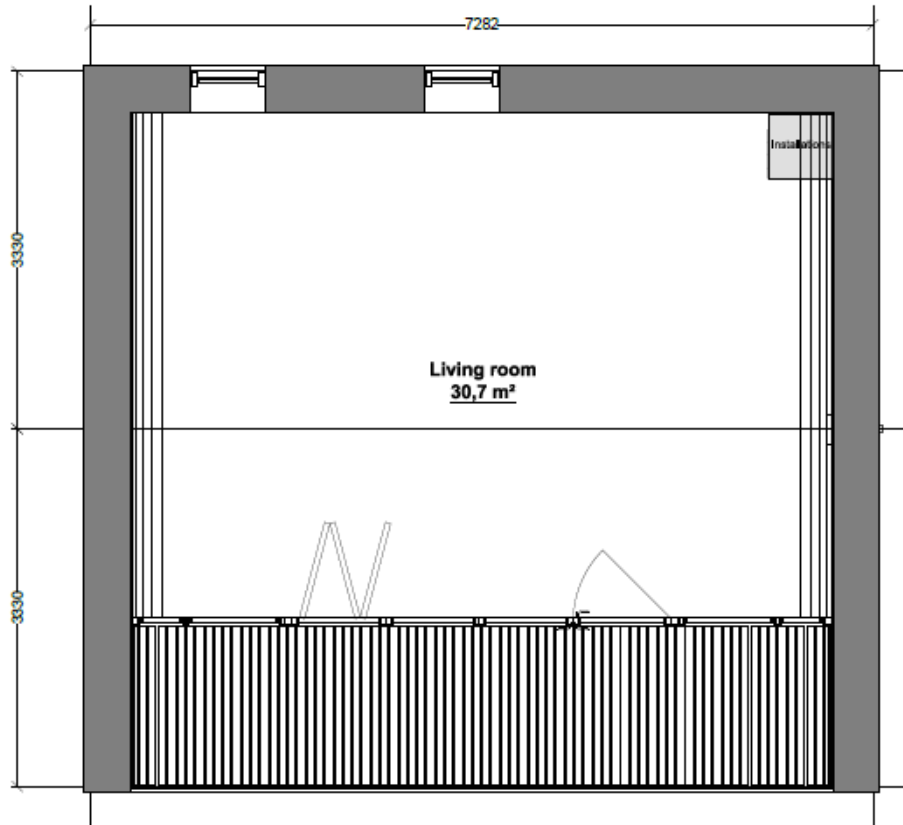


Back elevation

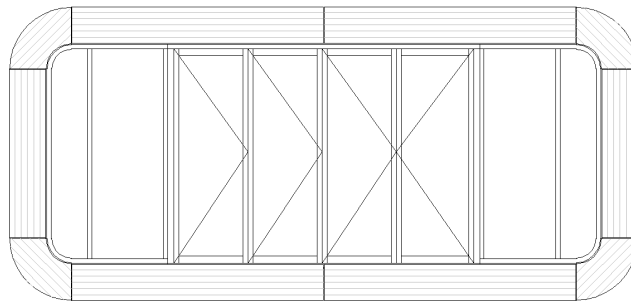
Copyright information

The contents of this document are copyright of LTG Lofts to go OÜ. All Rights Reserved. Information in this document, including but not limited to, text and images, may not, except for strictly private purposes or where otherwise indicated, be reproduced, transferred, distributed or stored without prior written permission by LTG Lofts to go. Modifications to the content of this document are expressly prohibited.

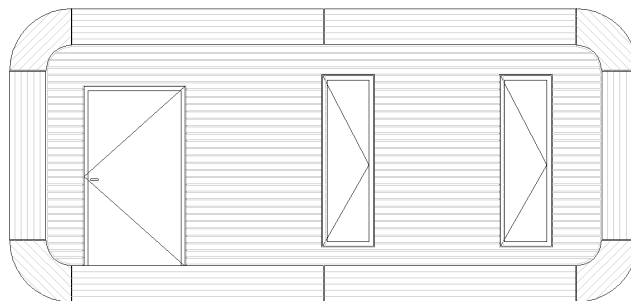
coodo 48 north - plain



Floor plan



Front elevation

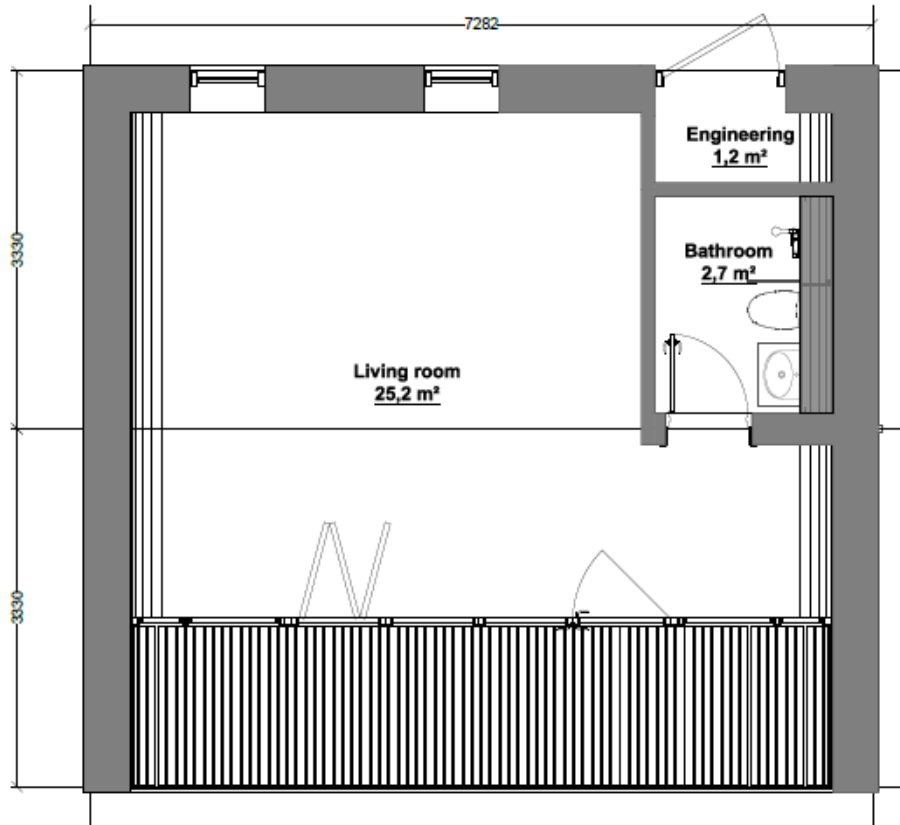


Back elevation

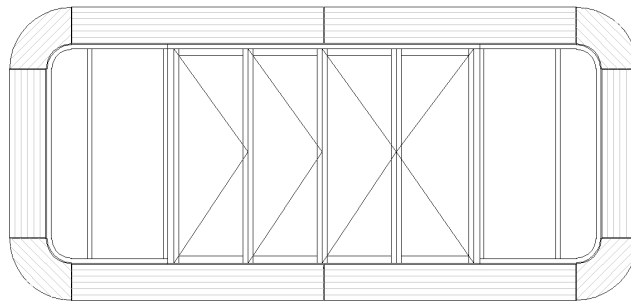
Copyright information

The contents of this document are copyright of LTG Lofts to go OÜ. All Rights Reserved. Information in this document, including but not limited to, text and images, may not, except for strictly private purposes or where otherwise indicated, be reproduced, transferred, distributed or stored without prior written permission by LTG Lofts to go. Modifications to the content of this document are expressly prohibited.

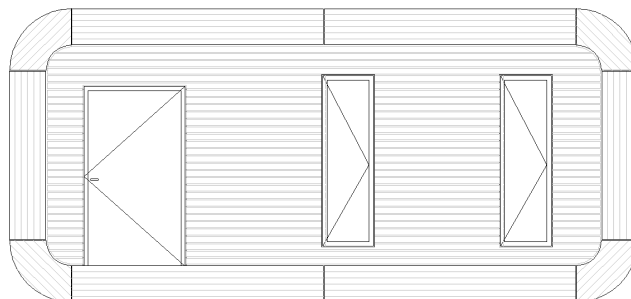
coodo 48 north - basic



Floor plan



Front elevation

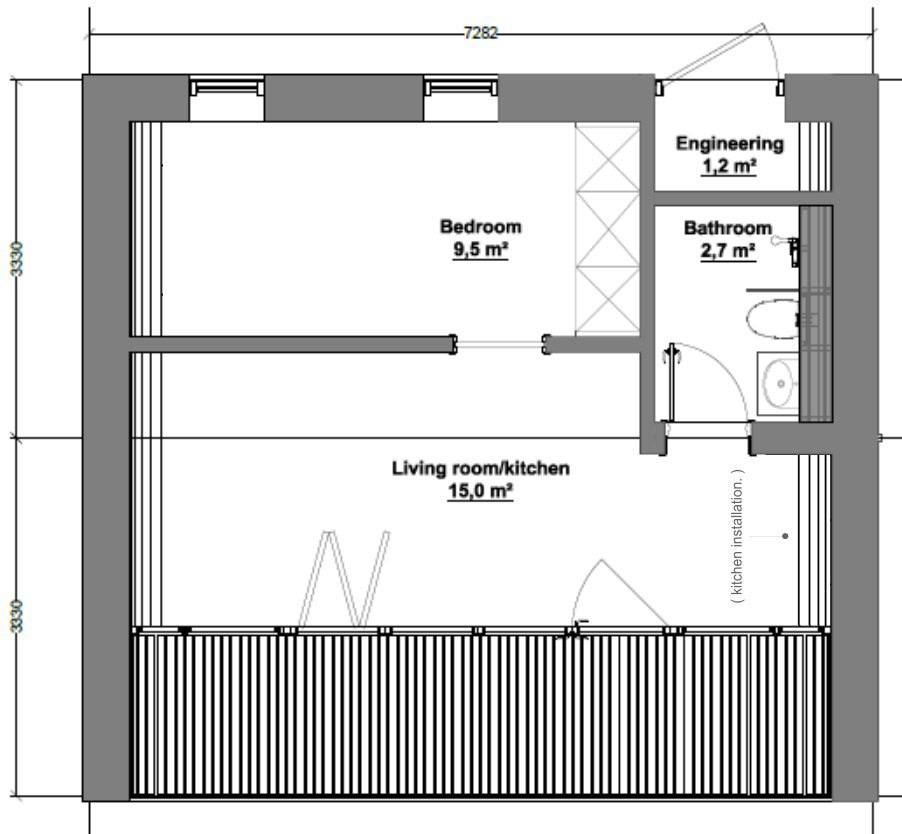


Back elevation

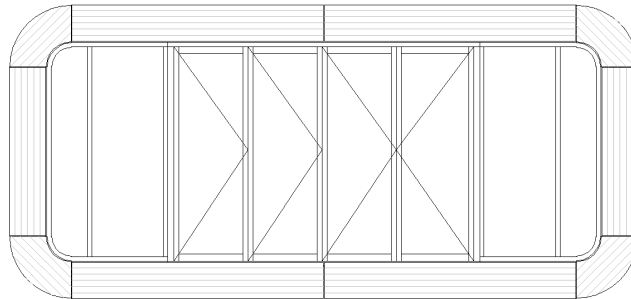
Copyright information

The contents of this document are copyright of LTG Lofts to go OÜ. All Rights Reserved. Information in this document, including but not limited to, text and images, may not, except for strictly private purposes or where otherwise indicated, be reproduced, transferred, distributed or stored without prior written permission by LTG Lofts to go. Modifications to the content of this document are expressly prohibited.

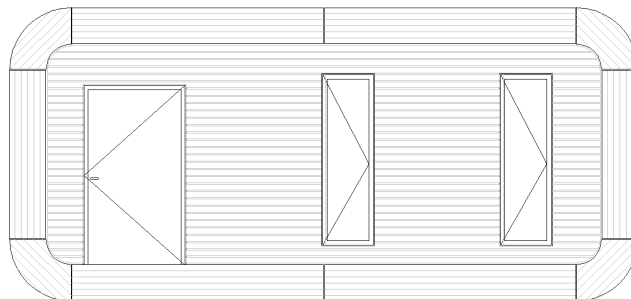
coodo 48 north - full



Floor plan



Front elevation



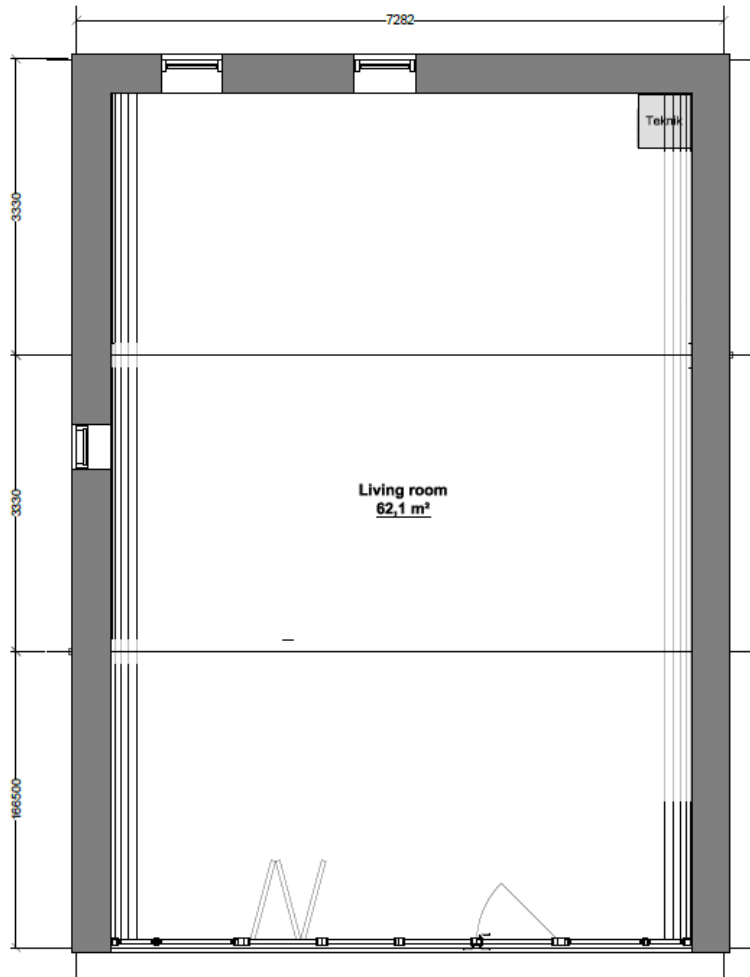
Back elevation

Copyright information

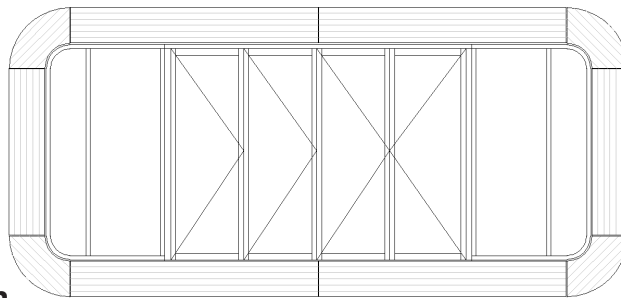
The contents of this document are copyright of LTG Lofts to go OÜ. All Rights Reserved. Information in this document, including but not limited to, text and images, may not, except for strictly private purposes or where otherwise indicated, be reproduced, transferred, distributed or stored without prior written permission by LTG Lofts to go. Modifications to the content of this document are expressly prohibited.

| coodo 48 & north | | | | |
|--------------------------|----------------------|--|--|--|
| | | Plain | Basic | Living |
| | | 48 one-side glazed | 48 one-side glazed with bathroom | 48 one-side glazed with bathroom, kitchen and room |
| gross area [m2] | | 48,84 | 48,84 | 48,84 |
| module size [m] | | 7,4 x 3,3 | 7,4 x 3,3 | 7,4 x 3,3 |
| building size [m] | | 7,4 x 6,6 | 7,4 x 6,6 | 7,4 x 6,6 |
| facade material | | Douglaswood | Douglaswood | Douglaswood |
| window wall | type | aluminium, colour RAL 7016, folding windows, U=1,6 | aluminium, colour RAL 7016, folding windows, U=1,6 | aluminium, colour RAL 7016, folding windows, U=1,6 |
| | amount | 1 | 1 | 1 |
| windows | type | x | aluminum, colour RAL 7016, U=1,6 | aluminum, colour RAL 7016, U=1,6 |
| | amount | x | 2 | 2 |
| external door | type | | aluminium | aluminium |
| | amount | x | 1 | 1 |
| internal door | type | x | white laminate board, sliding | white laminate board, sliding |
| | amount | x | 1 | 2 |
| wall finishing | rooms | painted plasterboard | painted plasterboard | painted plasterboard |
| | bathroom | x | ceramic tiles | ceramic tiles |
| floor finishing | rooms | wooden flooring | vinyl panels | wooden flooring |
| | bathroom | x | wooden flooring | ceramic tiles |
| ceiling finishing | | painted plasterboard | painted plasterboard | painted plasterboard |
| bathroom | | x | 1 | 1 |
| | equipment | x | shower tray, shower faucet, toilet, basin + faucet, under basin cupboard | shower tray, shower faucet, toilet, basin + faucet, under basin cupboard |
| lighting | main points | 14 | 14 | 14 |
| | decorative lightning | x | x | x |
| kitchen | | x | x | prepared for installation |
| | equipment | x | x | x |
| electrics | nb of plugs | 24 1 TV, 1 Internet | 24 1 TV, 1 Internet | 24 1 TV, 1 Internet |
| heating | | prepared for | included | included |
| ventilation | | recuperator | recuperator | recuperator |
| air-con | | x | x | x |
| water supply | | x | Outlet for toilet ø-110, Outlet for shower DN 75, Outlet basin DN 50 PE/PP | Outlet for toilet ø-110, Outlet for shower DN 75, Outlet basin DN 50 PE/PP |
| additional room | | x | x | 1 |
| technical room | | x | 1 | 1 |
| pergola | | x | x | x |

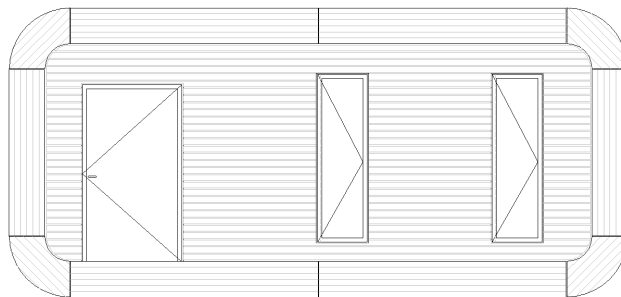
coodo 72 - plain



Floor plan



Front elevation

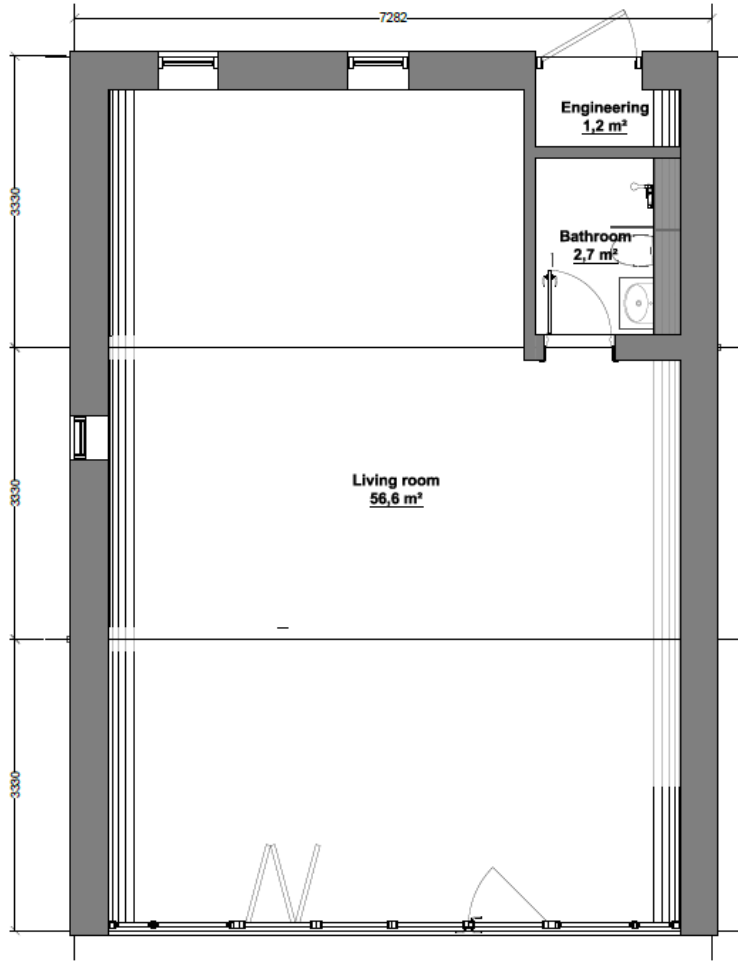


Back elevation

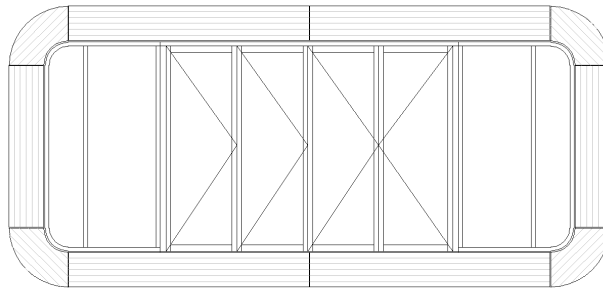
Copyright information

The contents of this document are copyright of LTG Lofts to go OÜ. All Rights Reserved. Information in this document, including but not limited to, text and images, may not, except for strictly private purposes or where otherwise indicated, be reproduced, transferred, distributed or stored without prior written permission by LTG Lofts to go. Modifications to the content of this document are expressly prohibited.

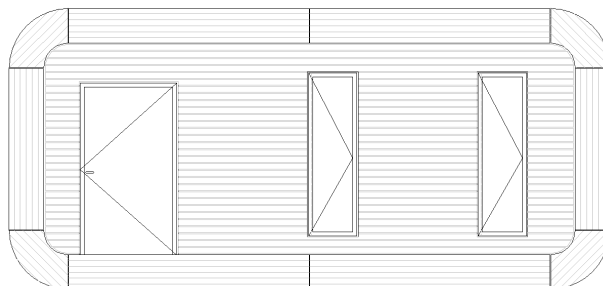
coodo 72 - basic



Floor plan



Front elevation

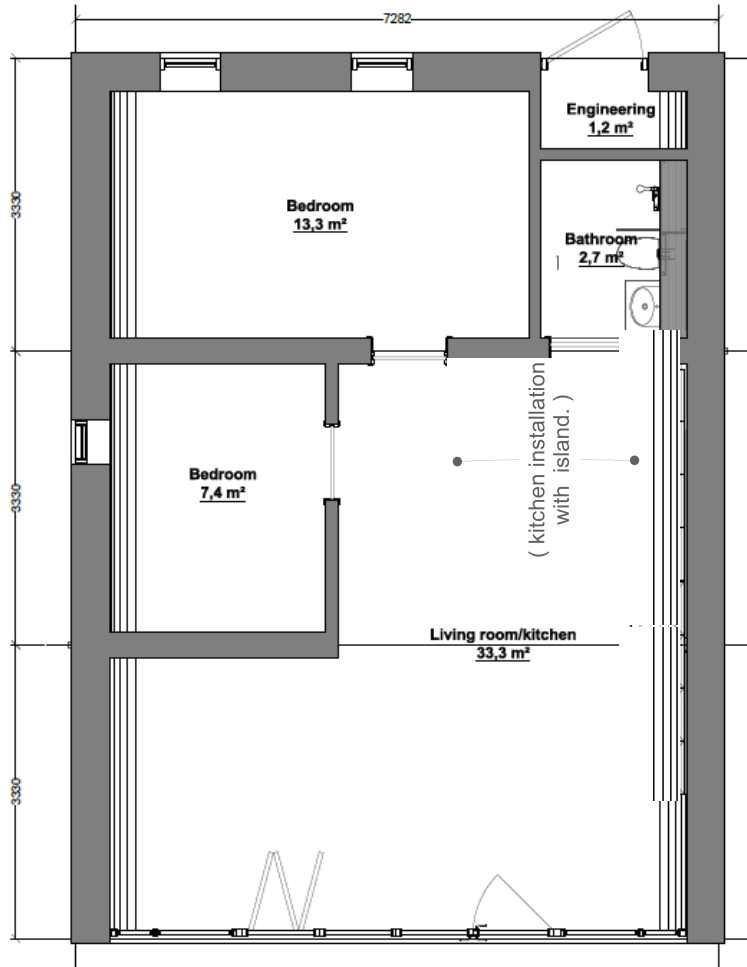


Back elevation

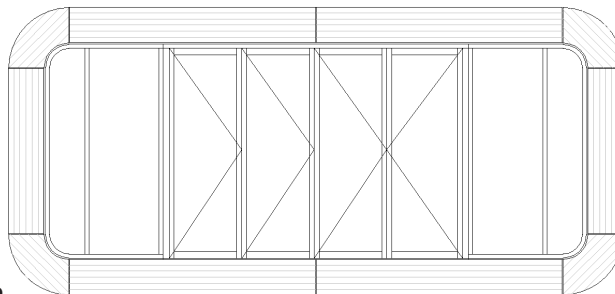
Copyright information

The contents of this document are copyright of LTG Lofts to go OÜ. All Rights Reserved. Information in this document, including but not limited to, text and images, may not, except for strictly private purposes or where otherwise indicated, be reproduced, transferred, distributed or stored without prior written permission by LTG Lofts to go. Modifications to the content of this document are expressly prohibited.

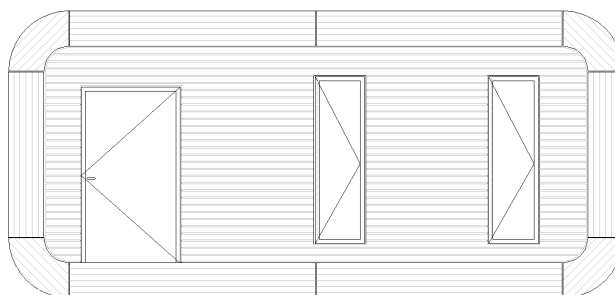
coodo 72 - living



Floor plan



Front elevation

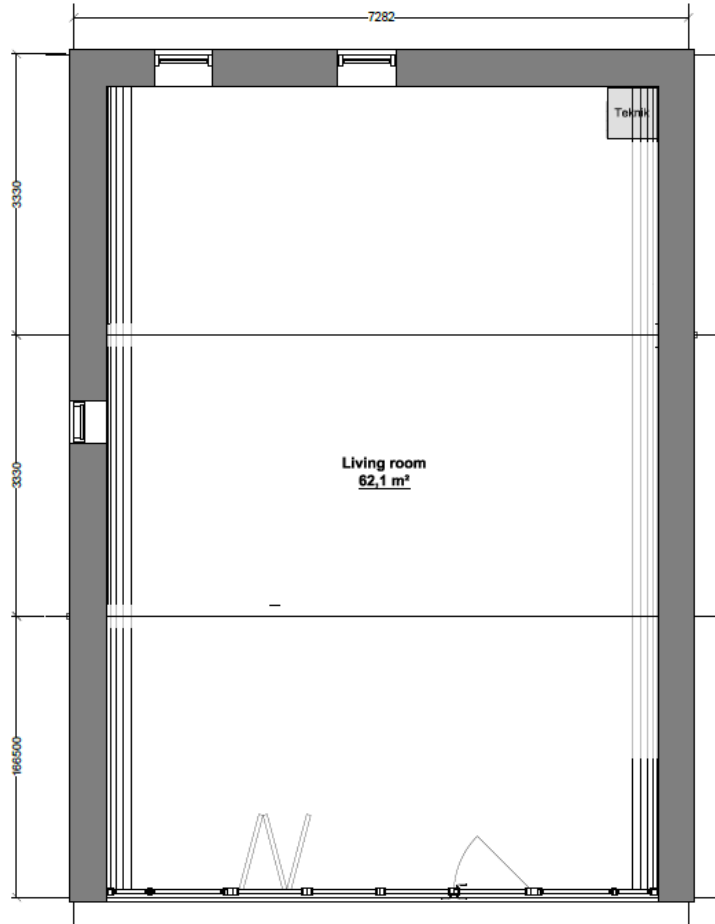


Back elevation

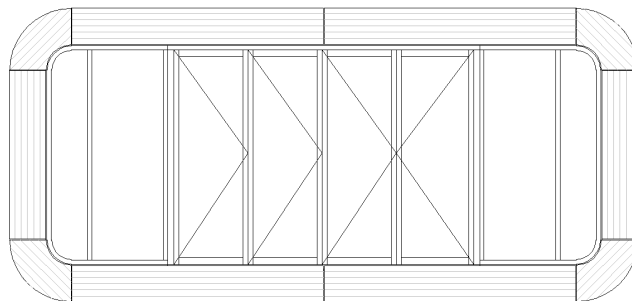
Copyright information

The contents of this document are copyright of LTG Lofts to go OÜ. All Rights Reserved. Information in this document, including but not limited to, text and images, may not, except for strictly private purposes or where otherwise indicated, be reproduced, transferred, distributed or stored without prior written permission by LTG Lofts to go. Modifications to the content of this document are expressly prohibited.

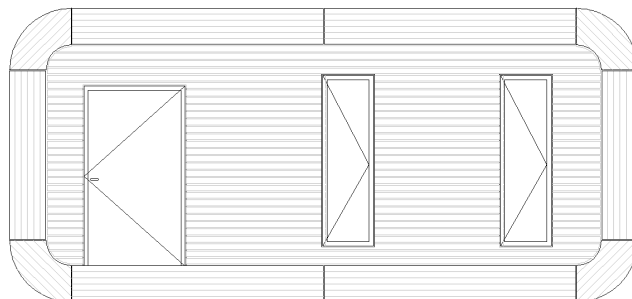
coodo north 72 - plain



Floor plan



Front elevation

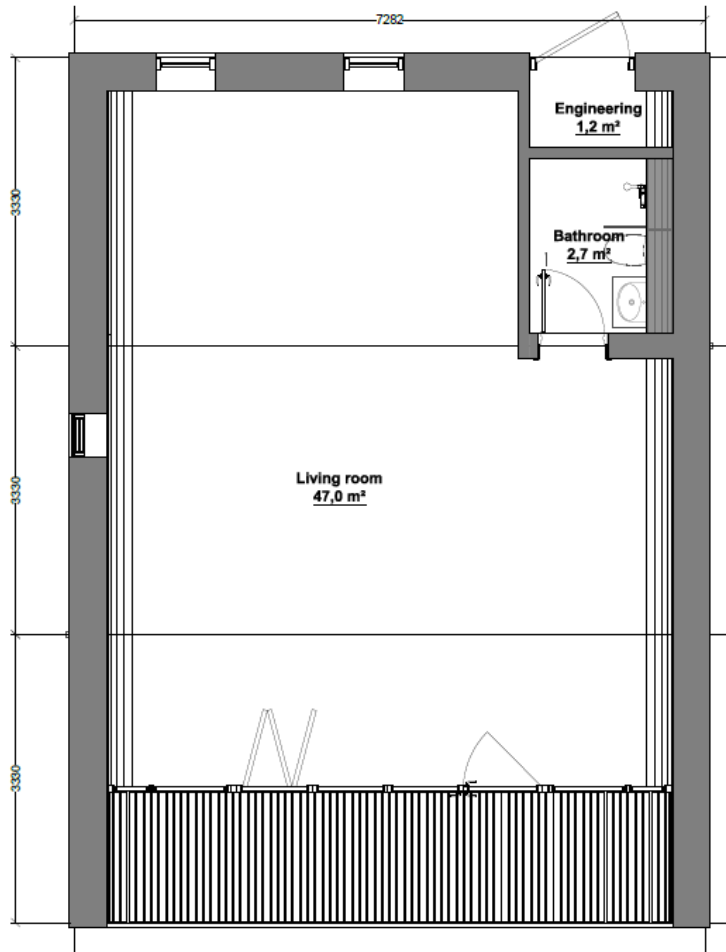


Back elevation

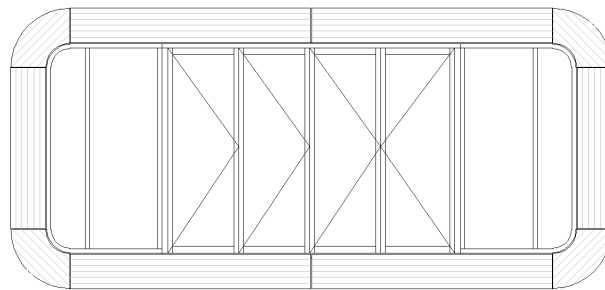
Copyright information

The contents of this document are copyright of LTG Lofts to go OÜ. All Rights Reserved. Information in this document, including but not limited to, text and images, may not, except for strictly private purposes or where otherwise indicated, be reproduced, transferred, distributed or stored without prior written permission by LTG Lofts to go. Modifications to the content of this document are expressly prohibited.

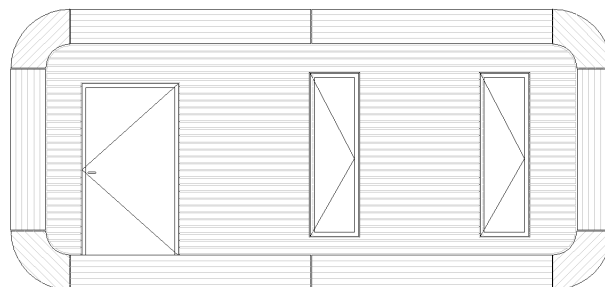
coodo north 72 - basic



Floor plan



Front elevation

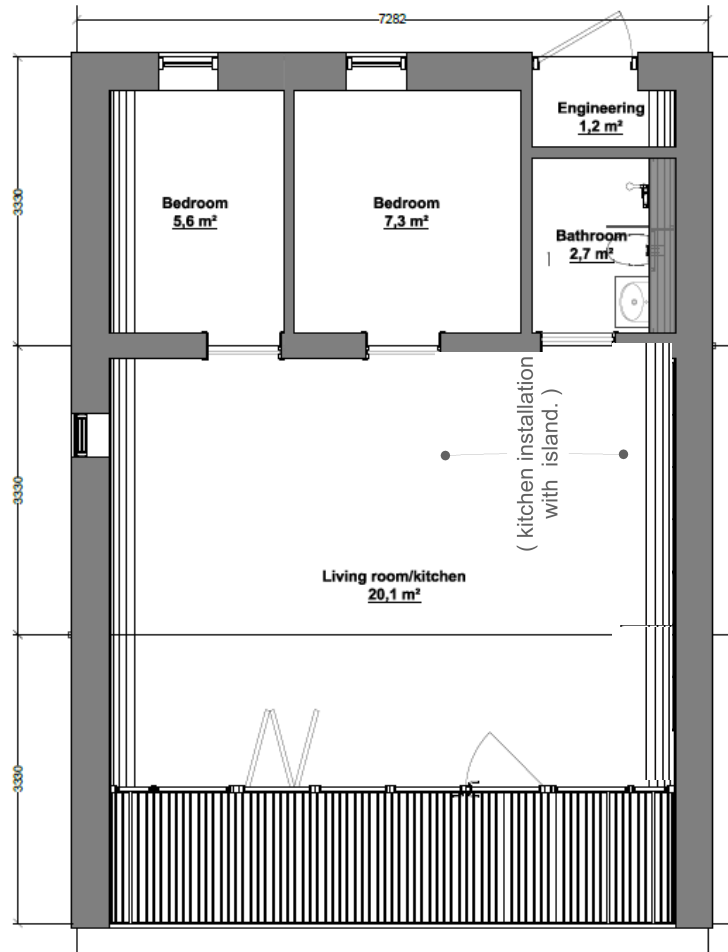


Back elevation

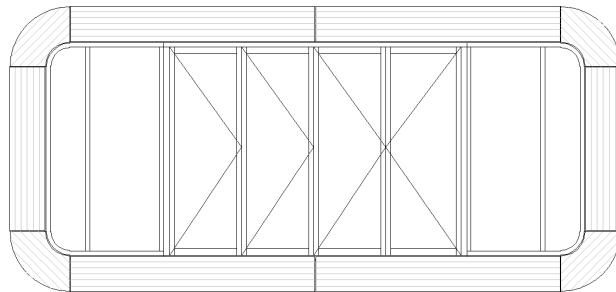
Copyright information

The contents of this document are copyright of LTG Lofts to go OÜ. All Rights Reserved. Information in this document, including but not limited to, text and images, may not, except for strictly private purposes or where otherwise indicated, be reproduced, transferred, distributed or stored without prior written permission by LTG Lofts to go. Modifications to the content of this document are expressly prohibited.

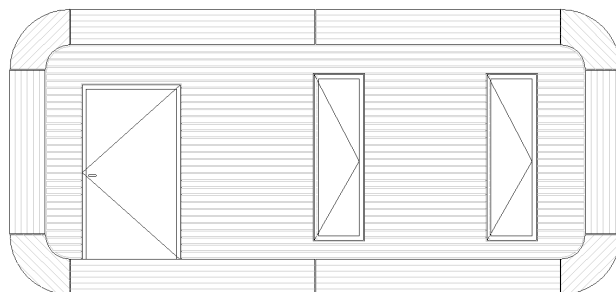
coodo north 72 - full



Floor plan



Front elevation



Back elevation

Copyright information

The contents of this document are copyright of LTG Lofts to go OÜ. All Rights Reserved. Information in this document, including but not limited to, text and images, may not, except for strictly private purposes or where otherwise indicated, be reproduced, transferred, distributed or stored without prior written permission by LTG Lofts to go. Modifications to the content of this document are expressly prohibited.

| codo 72 & north | | | | |
|--------------------------|----------------------|--|--|--|
| | | Plain | Basic | Living |
| | | 72 one-side glazed | 72 one-side glazed with bathroom | 72 one-side glazed with bathroom, kitchen and room |
| gross area [m2] | | 73,26 | 73,26 | 73,26 |
| module size [m] | | 7,4 x 3,3 | 7,4 x 3,3 | 7,4 x 3,3 |
| building size [m] | | 7,4 x 9,9 | 7,4 x 9,9 | 7,4 x 9,9 |
| facade material | | Douglaswood | Douglaswood | Douglaswood |
| window wall | type | aluminium, colour RAL 7016, folding windows, U=1,6 | aluminium, colour RAL 7016, folding windows, U=1,6 | aluminium, colour RAL 7016, folding windows, U=1,6 |
| | amount | 1 | 1 | 1 |
| windows | type | x | aluminum, colour RAL 7016, U=1,6 | aluminum, colour RAL 7016, U=1,6 |
| | amount | x | 3 | 3 |
| external door | type | | aluminium | aluminium |
| | amount | x | 1 | 1 |
| internal door | type | x | white laminate board, sliding | white laminate board, sliding |
| | amount | x | 1 | 2/3 |
| wall finishing | rooms | painted plasterboard | painted plasterboard | painted plasterboard |
| | bathroom | x | ceramic tiles | ceramic tiles |
| floor finishing | rooms | wooden flooring | wooden flooring | wooden flooring |
| | bathroom | x | ceramic tiles | ceramic tiles |
| ceiling finishing | | painted plasterboard | painted plasterboard | painted plasterboard |
| bathroom | | x | 1 | 1 |
| | equipment | x | shower tray, shower faucet, toilet, basin + faucet, under basin cupboard | shower tray, shower faucet, toilet, basin + faucet, under basin cupboard |
| lighting | main points | 14 | 14 | 14 |
| | decorative lightning | x | x | x |
| kitchen | | x | x | prepared for installation |
| | equipment | x | x | x |
| electrics | nb of plugs | 24 1 TV, 1 Internet | 24 1 TV, 1 Internet | 24 1 TV, 1 Internet |
| heating | | prepared for | included | included |
| ventilation | | recuperator | recuperator | recuperator |
| air-con | | x | x | x |
| water supply | | x | Outlet for toilet ø-110, Outlet for shower DN 75, Outlet basin DN 50 PE/PP | Outlet for toilet ø-110, Outlet for shower DN 75, Outlet basin DN 50 PE/PP |
| additional room | | x | x | 1/2 |
| technical room | | x | 1 | 1 |
| pergola | | x | x | x |